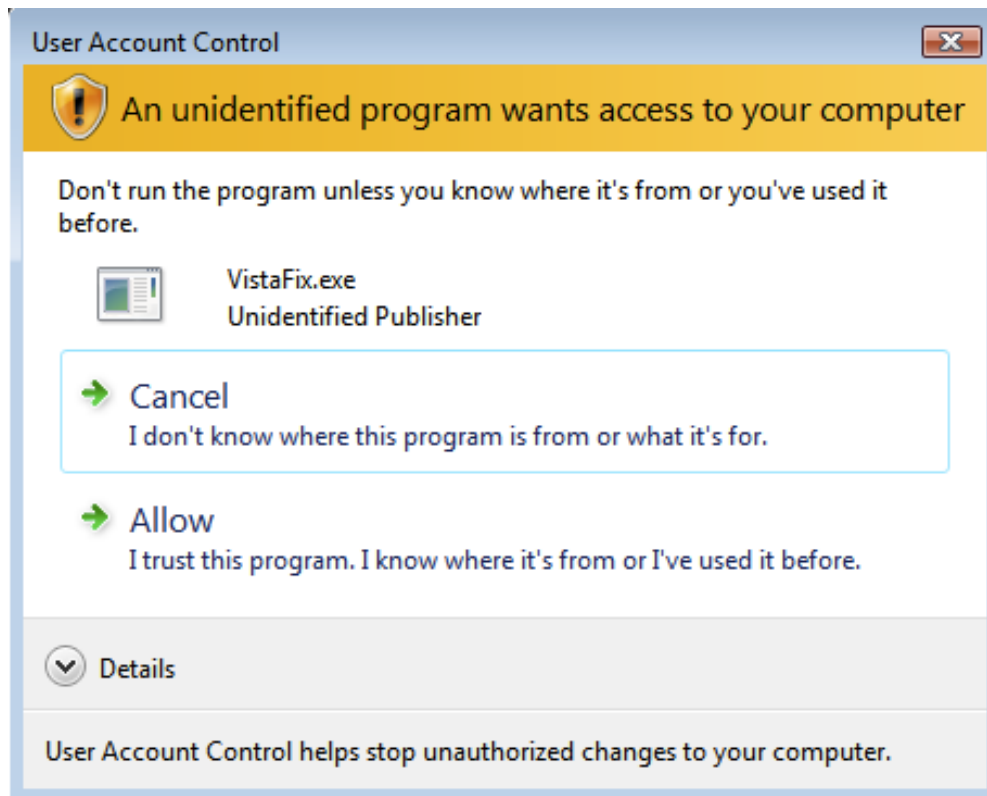


Mounting NetStorage on Windows Vista

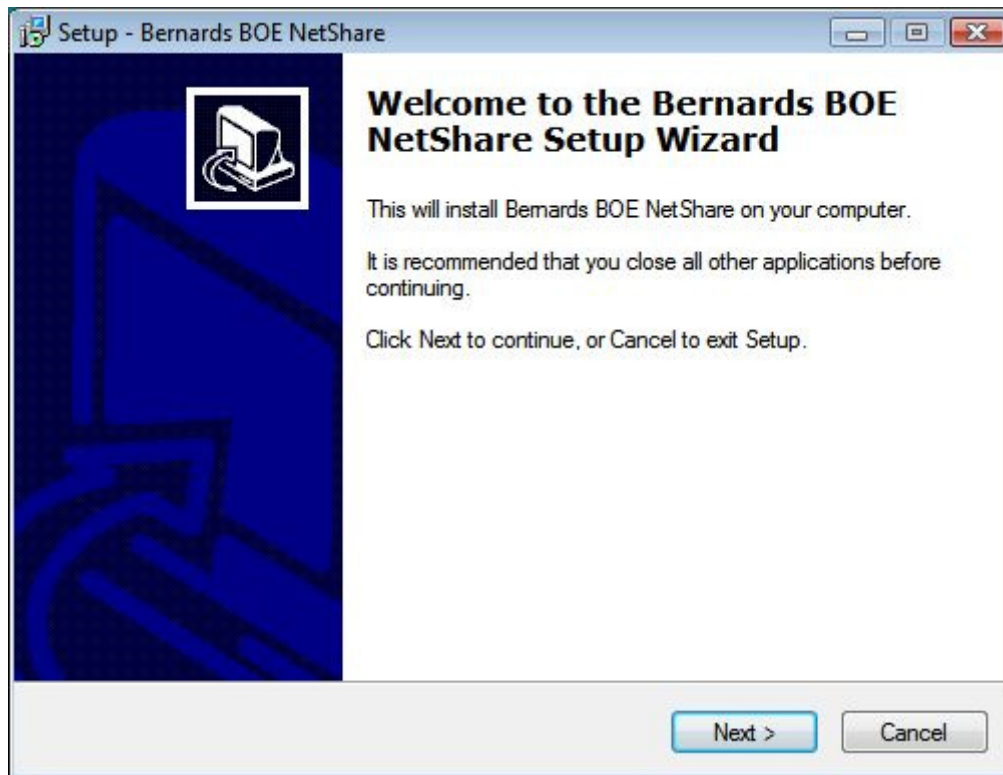
1. Download and double-click on **VistaFix.exe** from <http://www.bernardsboe.com/general/VistaFix.exe>



2. Press **Run** at the prompt that reads “Are you sure you want to run this software?”



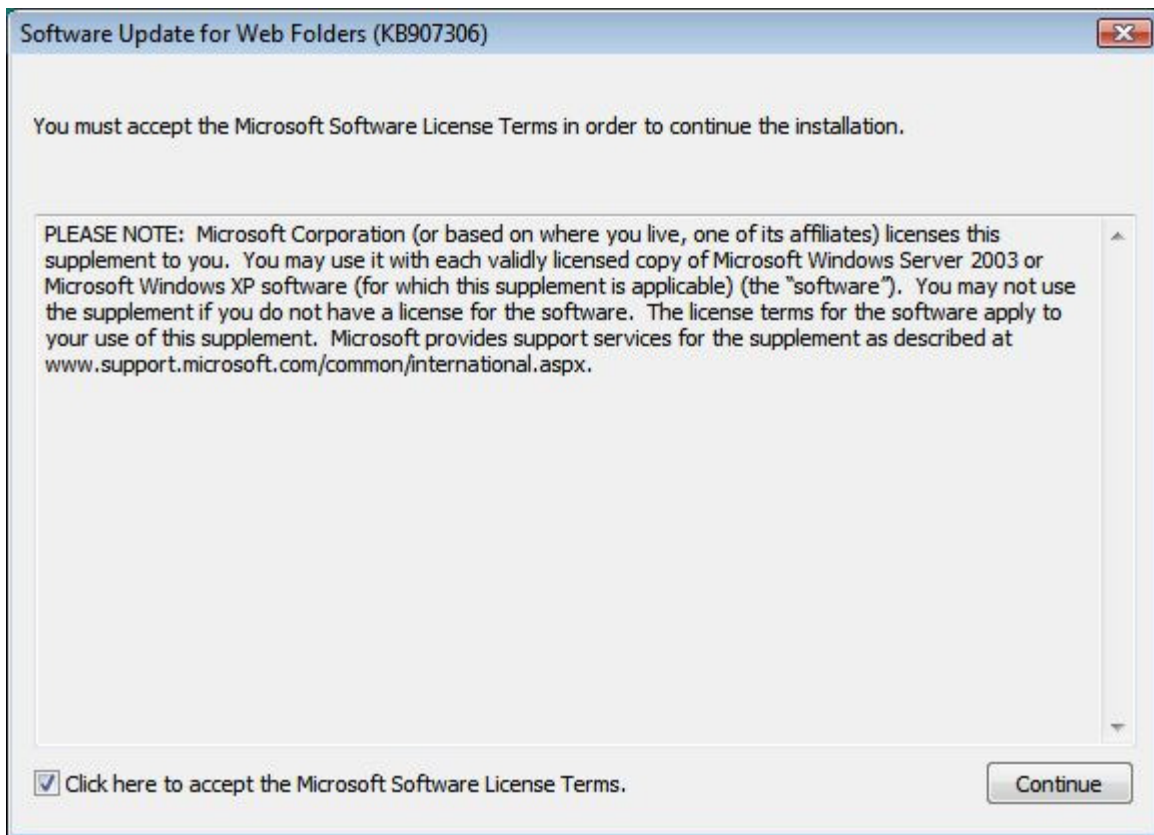
3. Press **Allow** at the “An unidentified program wants to access your computer” prompt.



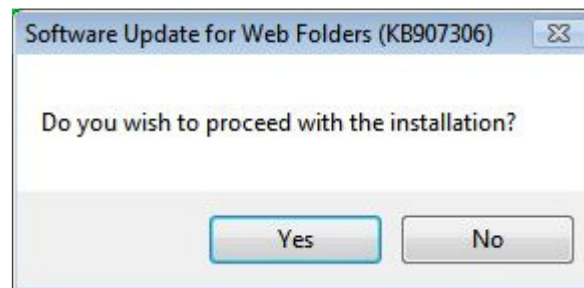
4. Press **Next** to begin the installation.



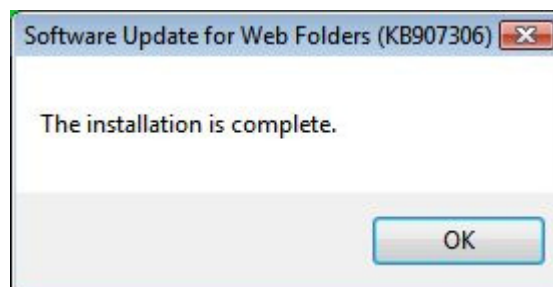
5. Press **Install**.



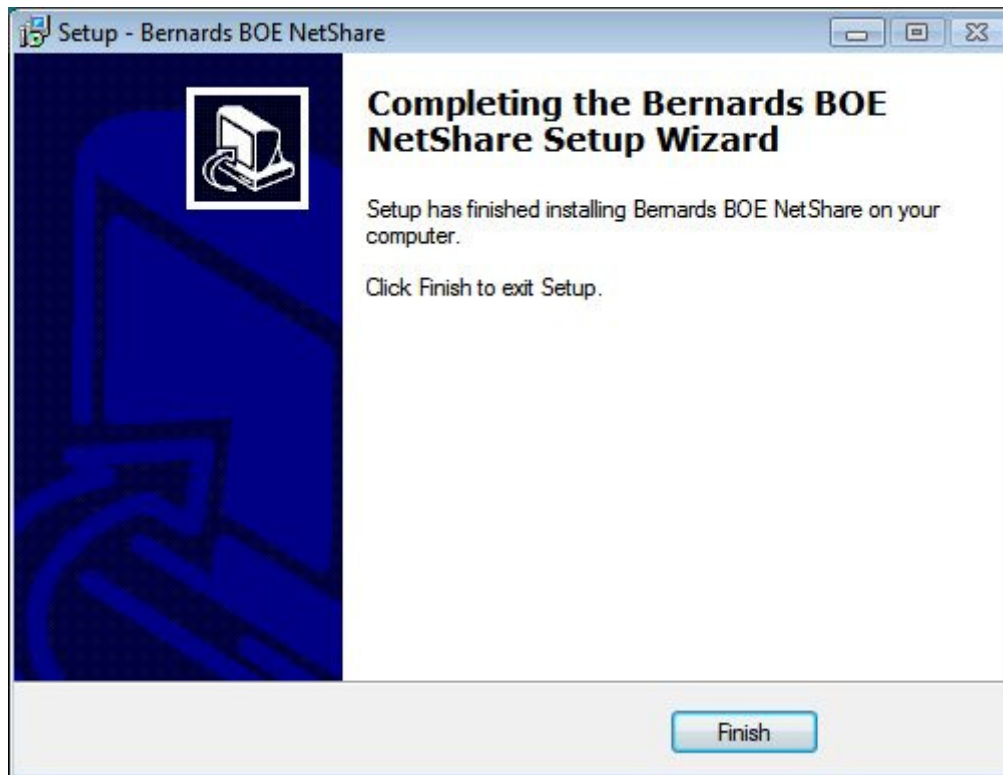
6. Check the box that reads **Click here to accept the Microsoft Software License Terms** and press **Continue**.



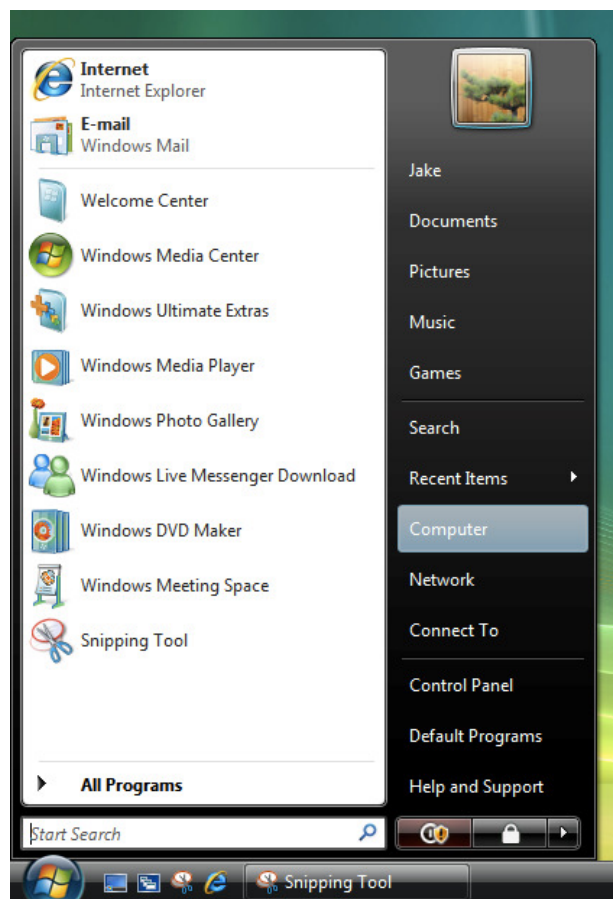
7. Press **Yes** when asked "Do you wish to proceed with the installation?"



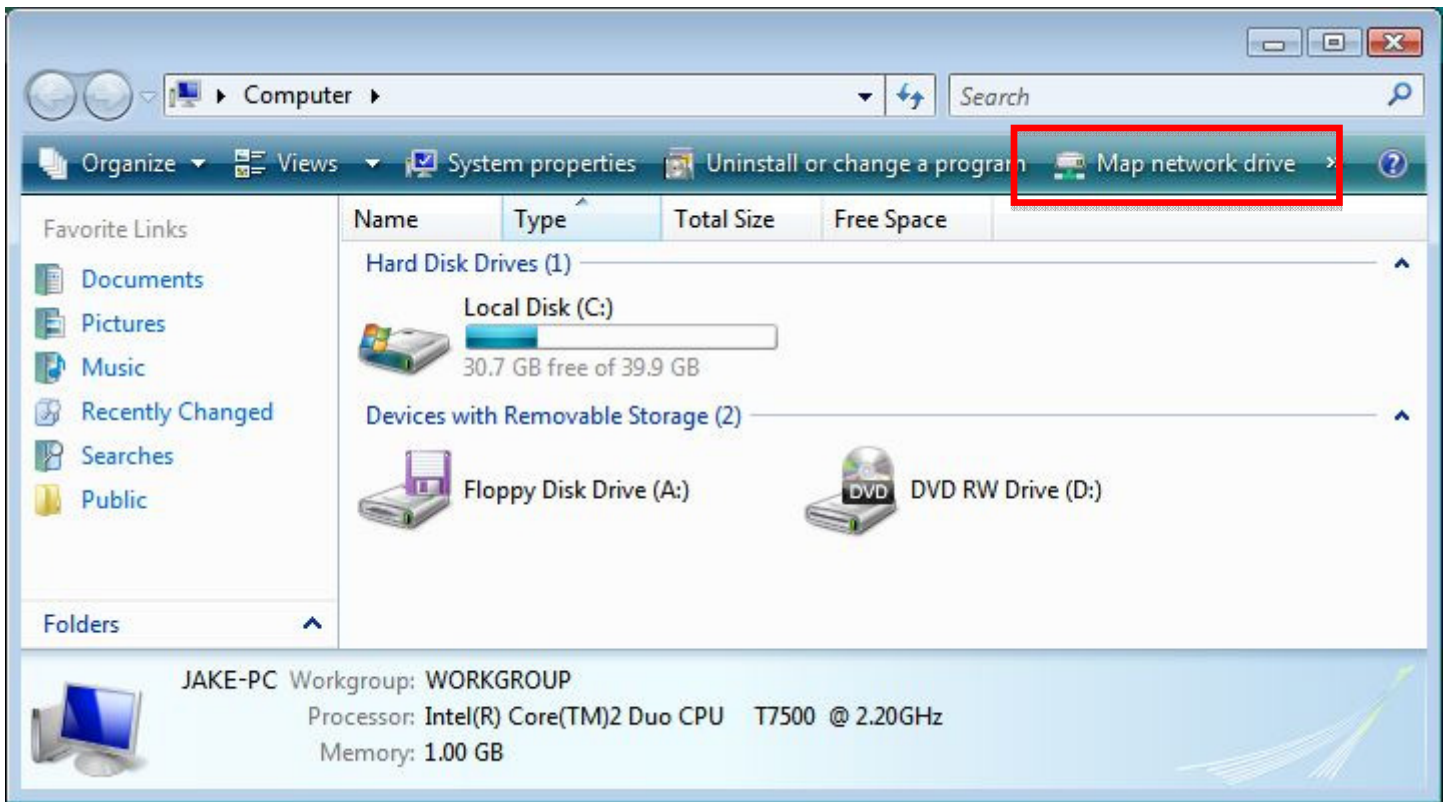
8. Press **OK** when notified "The installation is complete."



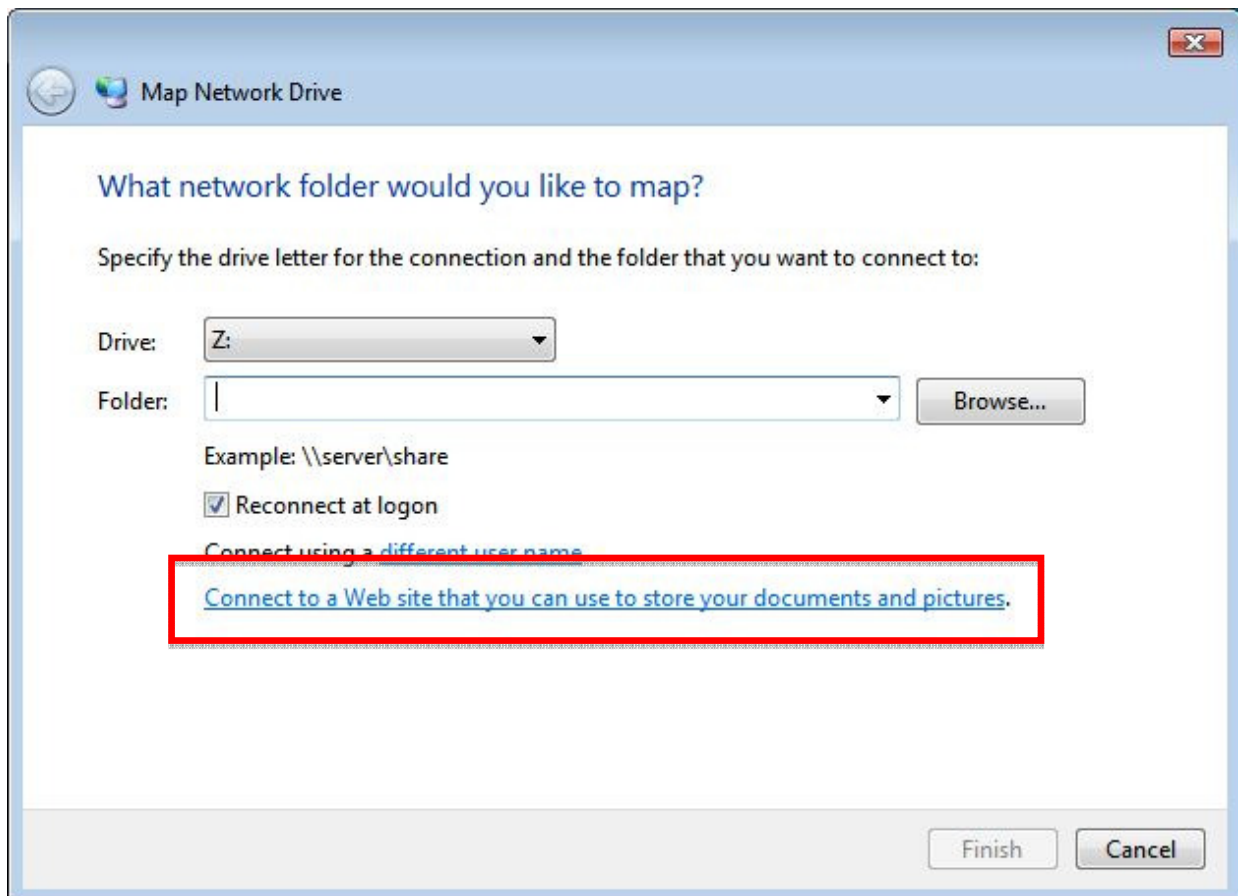
9. Press **Finish** to complete the installation.



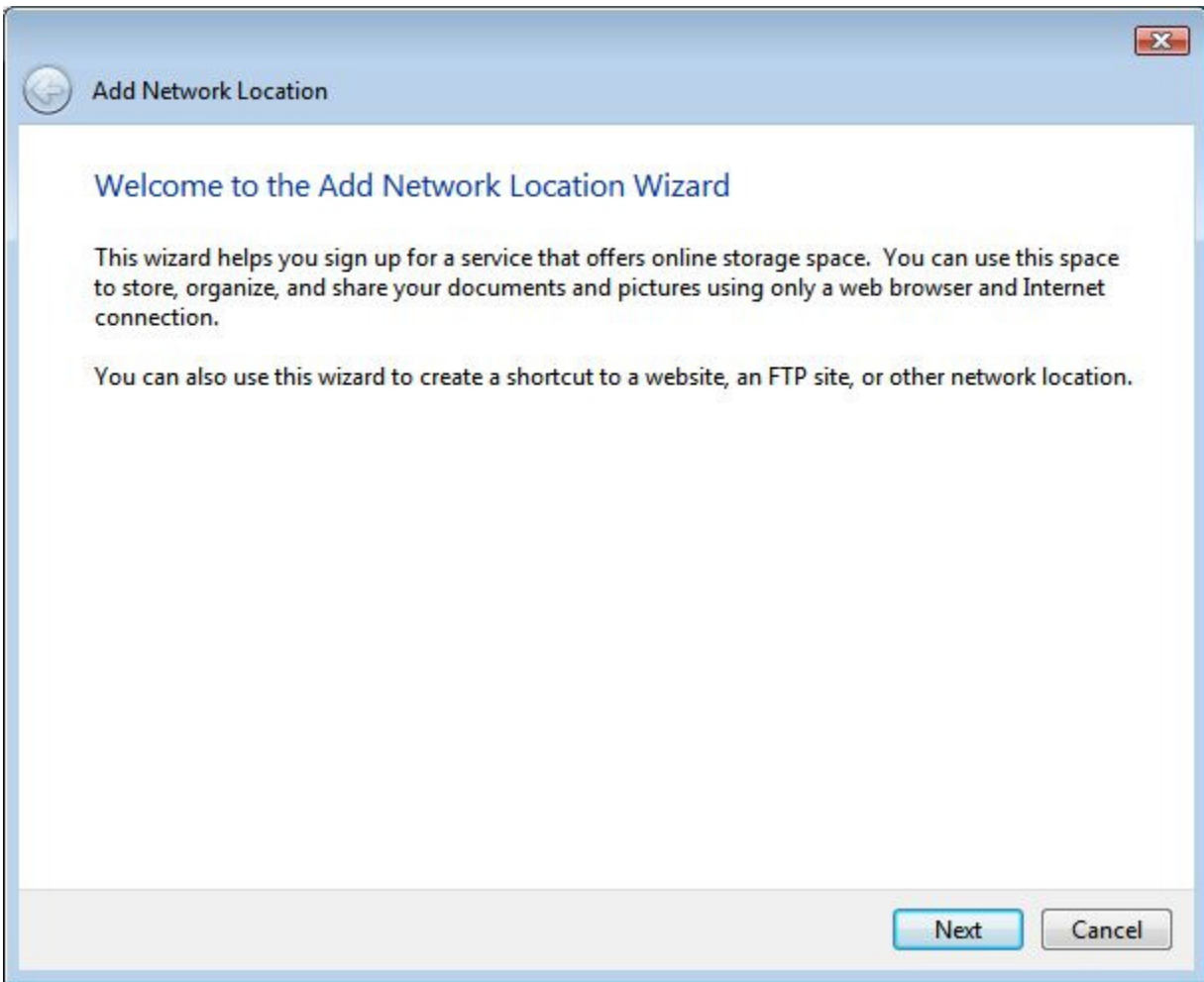
10. Open **My Computer** to begin the mounting process.



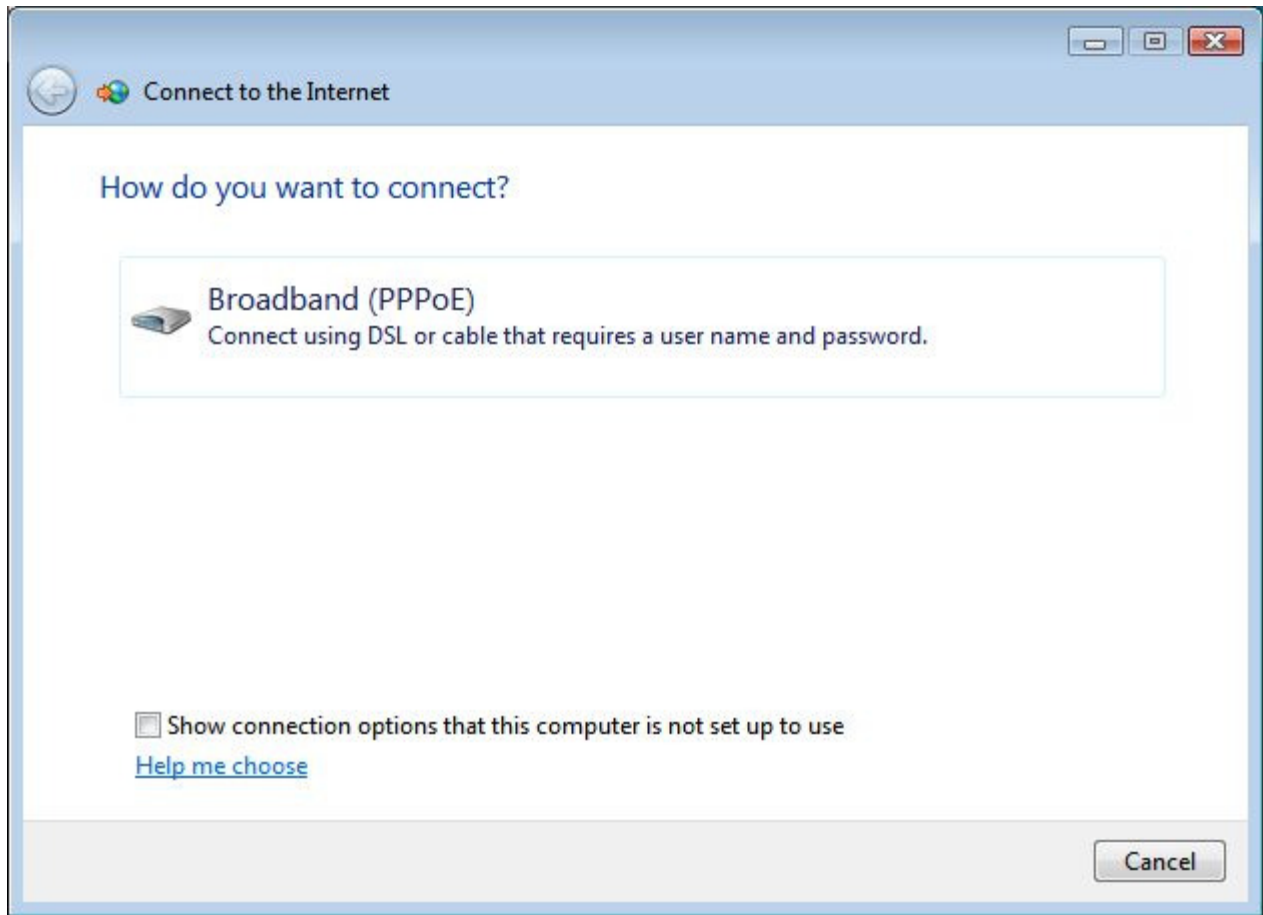
11. Press **Map network drive** towards the top right of the window.



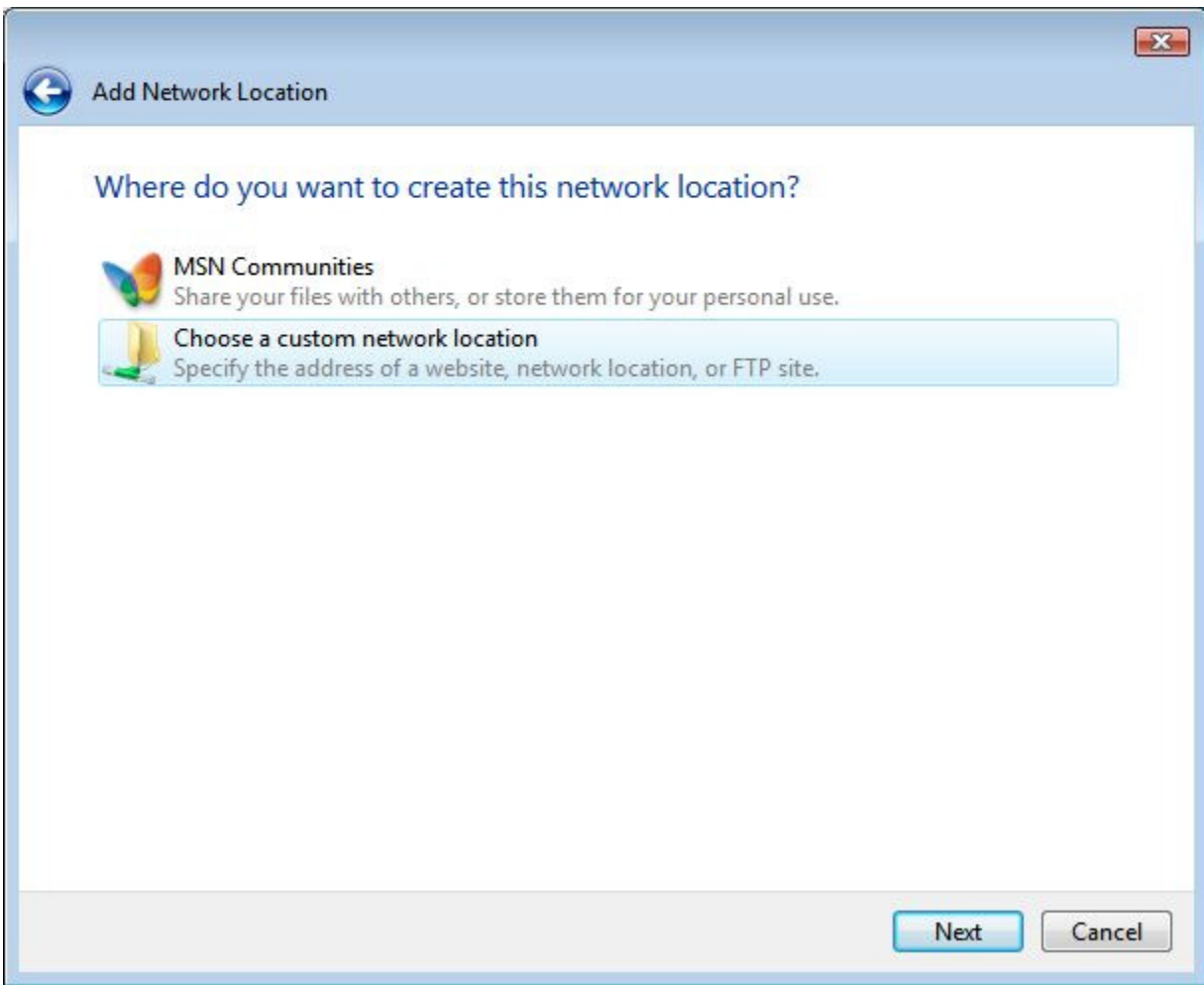
12. Click the **Connect to a Web site that you can use to store your documents and pictures** link towards the bottom of the window.



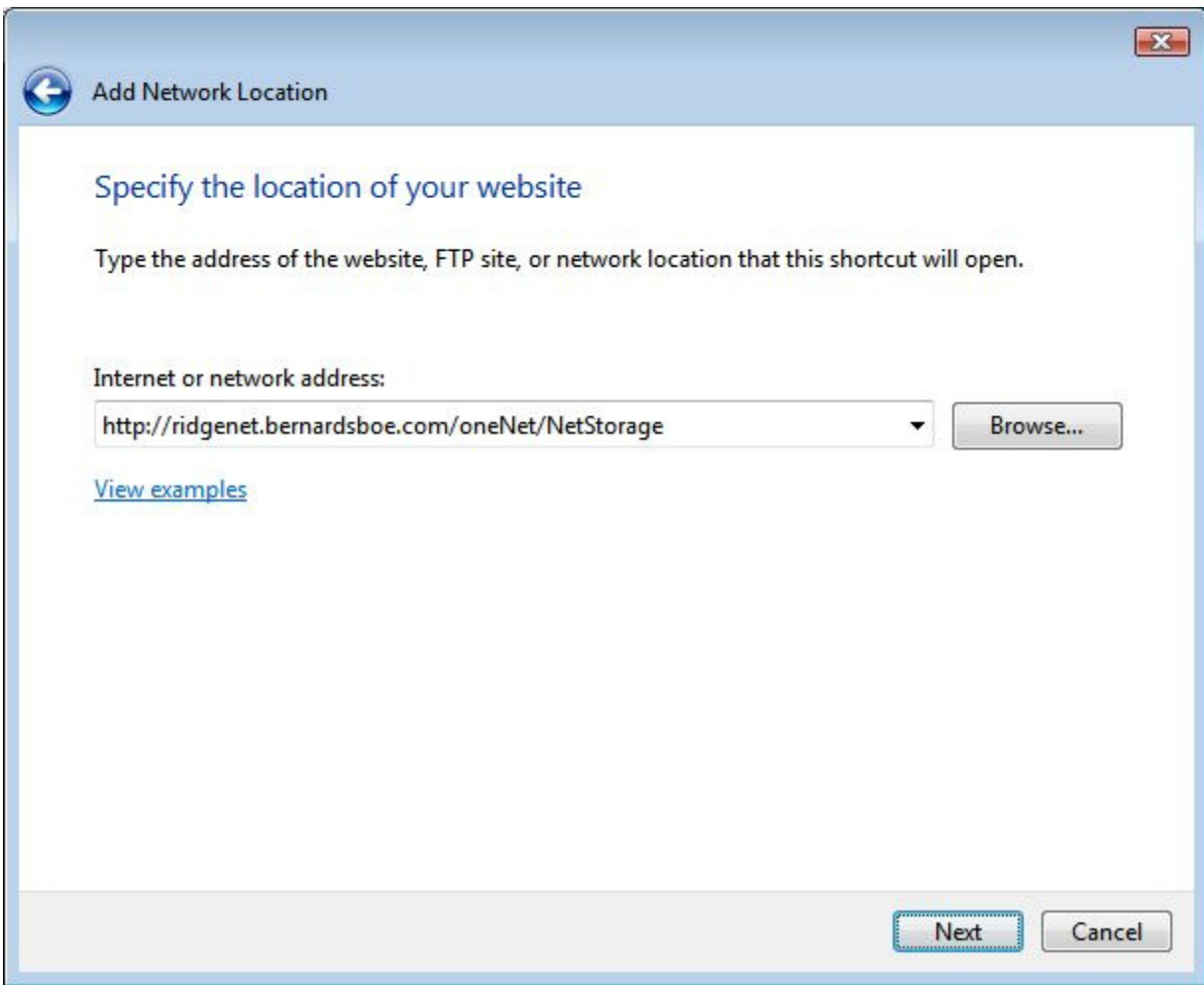
13. Press **Next** on the “Welcome to the Add Network Location Wizard” window.



14. At this point, a window asking "How do you want to connect?" may pop up. Press **Cancel**. If there is no window asking this, skip to the next step.



15. Highlight the **Choose a custom network location** option and press Next.



16. In the “Internet or network address” box, enter the appropriate URL:

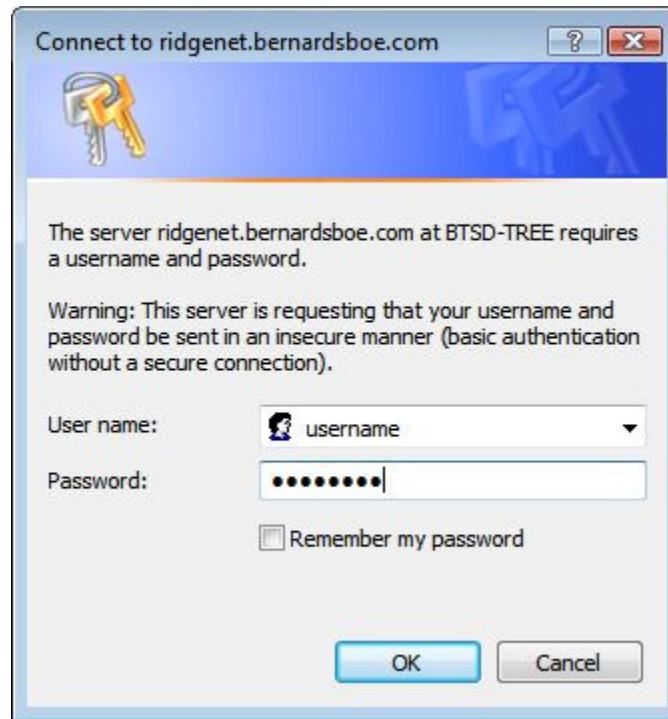
<https://ridgenet.bernardsboe.com/oneNet/NetStorage>

<https://anninnet.bernardsboe.com/oneNet/NetStorage>

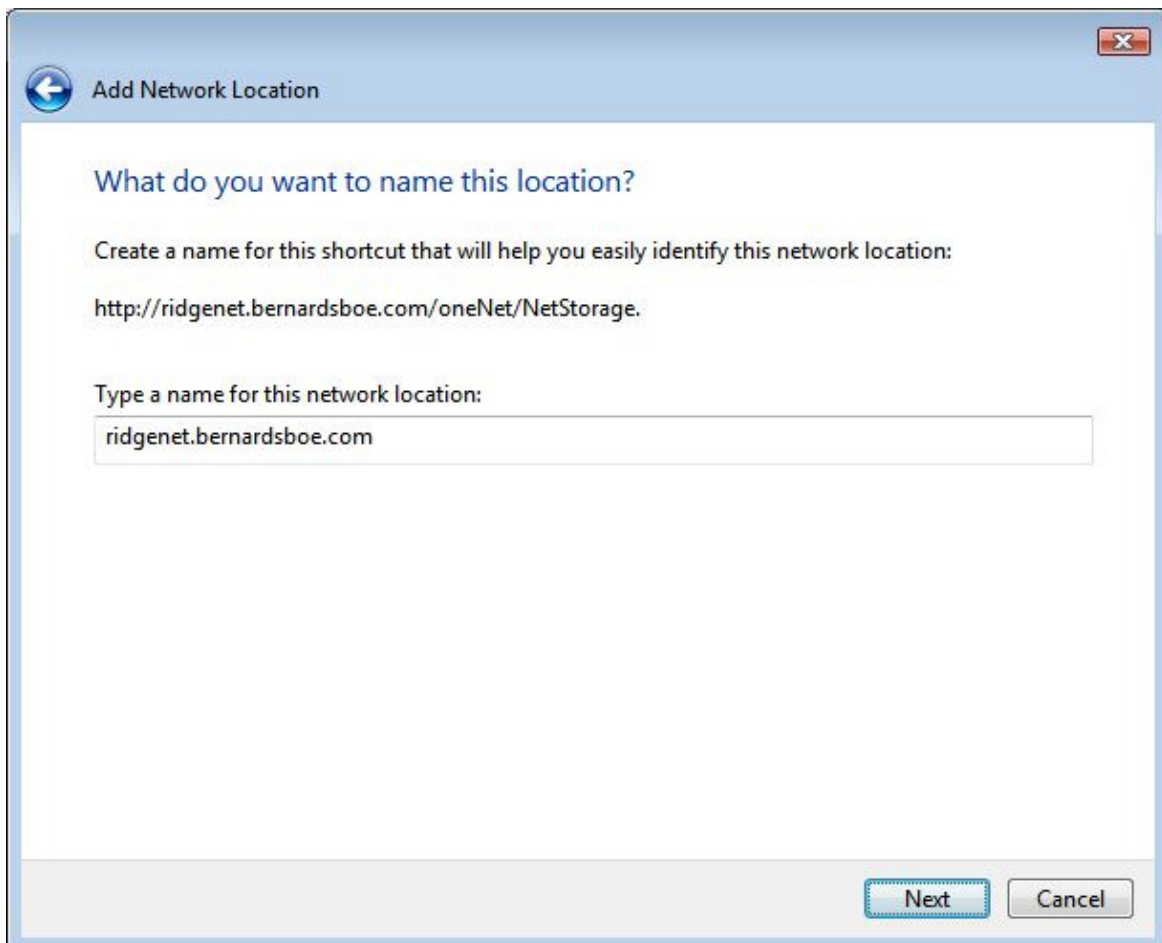
<https://k5net.bernardsboe.com/oneNet/NetStorage>



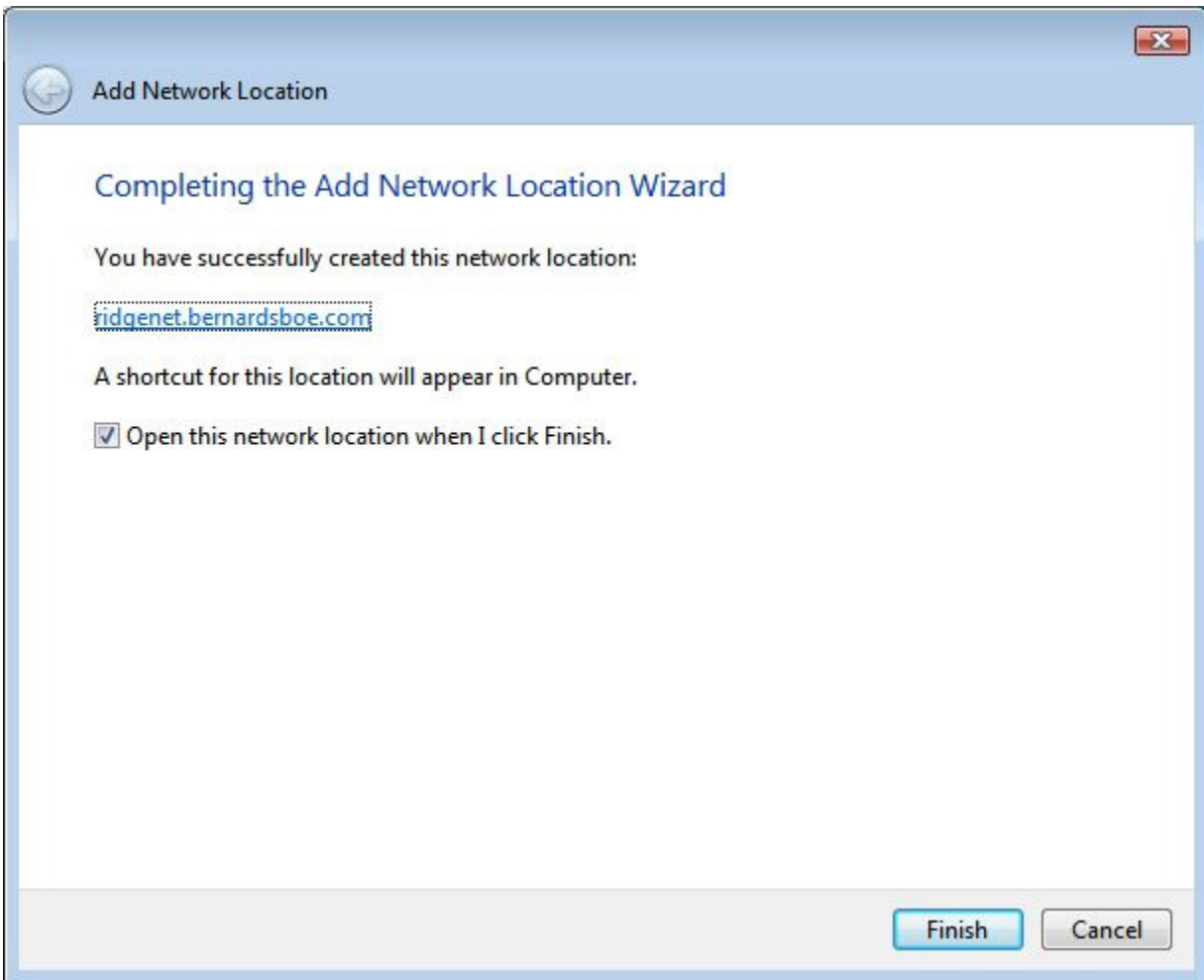
17. A security alert may pop up alerting you that “the name on the security certificate is invalid or does not match the name of the site.” Press **Yes** to proceed.



18. Enter your Novell username and password. Check the **Remember my password** box if this is your personal computer.



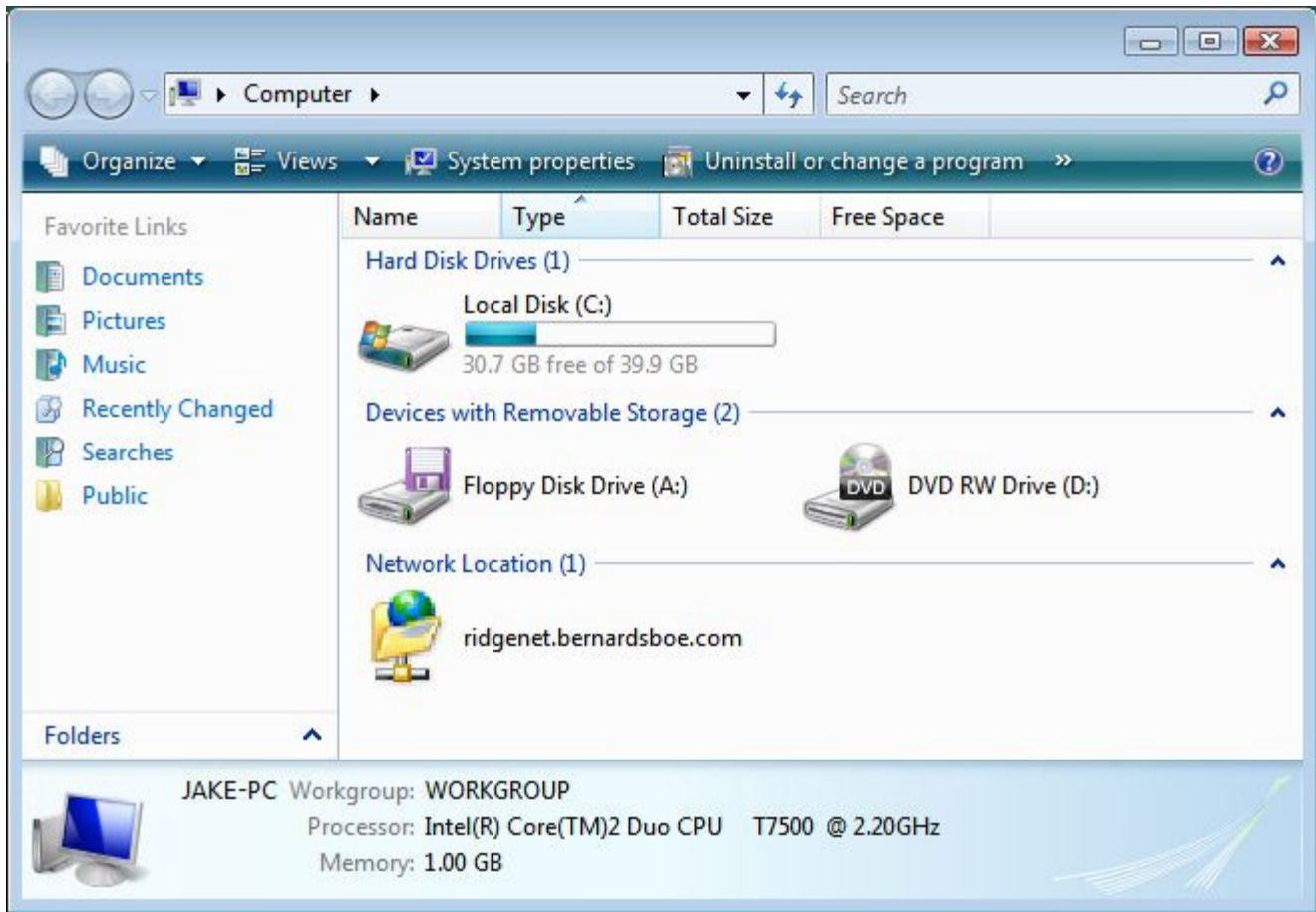
19. Name the location whatever you'd like, and press **Next**.



20. Check **Open this network location when I click Finish** and click **Finish**.



21. You may need to agree to the security alert again. Press **Yes**. You may also need to enter your Novell username and password again if you did not remember it in step 26.



22. You are now connected to NetStorage! Access your drive from **My Computer**.