

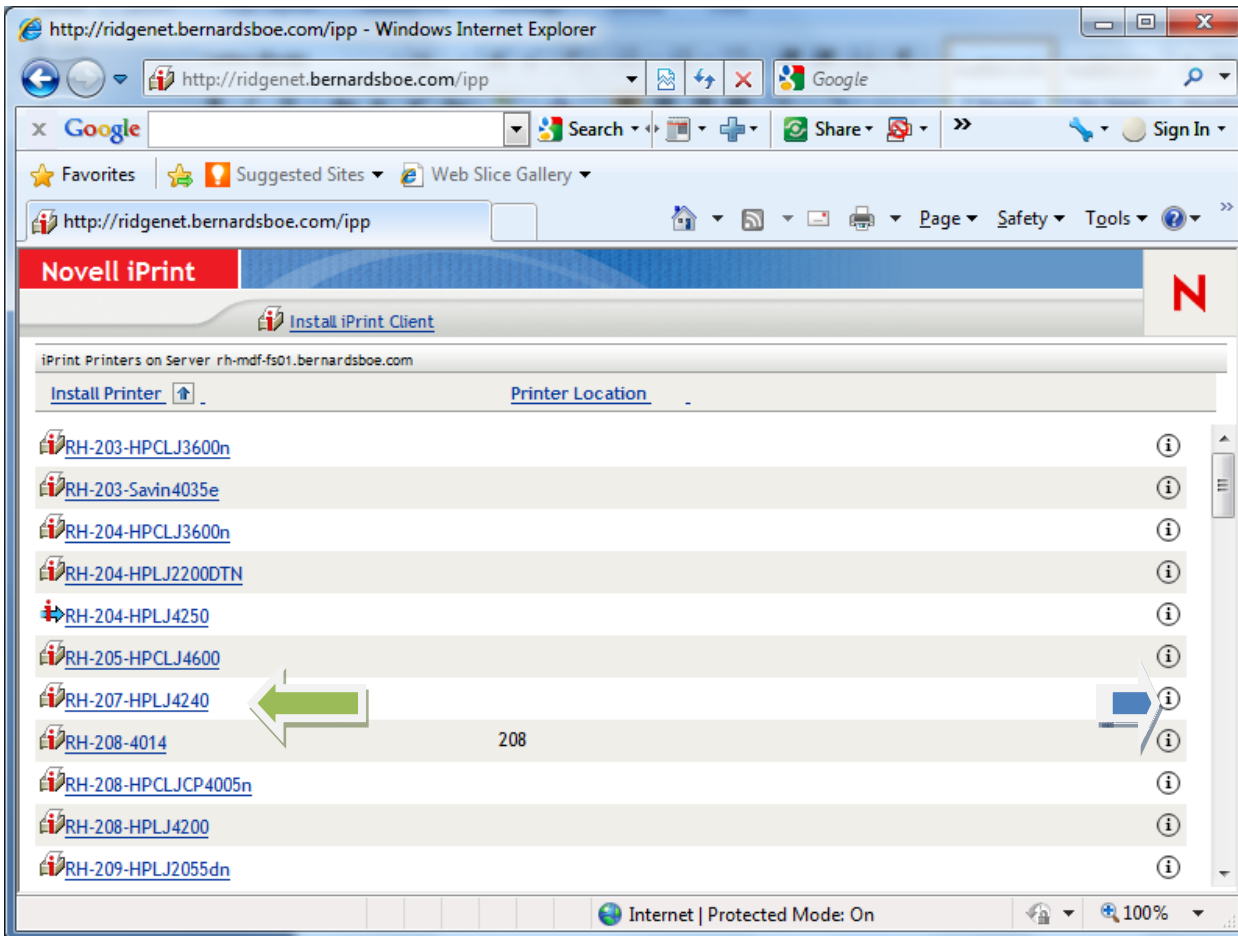
How to Add a Network Printer at Ridge and William Annin

Open a web browser and go to one of the following addresses:

For Ridge: <http://ridgenet.bernardsboe.com/ipp>

For Annin: <http://anninnet.bernardsboe.com/ipp>

Locate the desired printer by the printer names listed. The “i” in the circle to the right displays information about what kind of computers can print to that printer.



Once you've found the printer click on the “i” inside the circle to see if that printer has drivers for your computer's operating system,

The screenshot shows a web browser window with the URL <http://ridgenet.bernardsboe.com/ipp/RH-LMC-HPLJ4600>. The page title is "Novell iPrint". A "Refresh" button is visible. The printer name is "Printer RH-LMC-HPLJ4600".

Printer State: Idle
Printer is Accepting Jobs: Yes
Jobs Scheduled: 0

Location: Staff Access Only
Description: Staff Access Only
Duplex: No
Make and Model: HP Color LaserJet 4600 PCL 6
Printer URI: ipp://RH-MDF-FS01_MANAGER.bernardsboe.com/ipp/RH-LMC-HPL.
Security Enabled: No
Direct Print Enabled: No
Assigned Banner:
Server Operating System: Linux
Supported Document Formats:

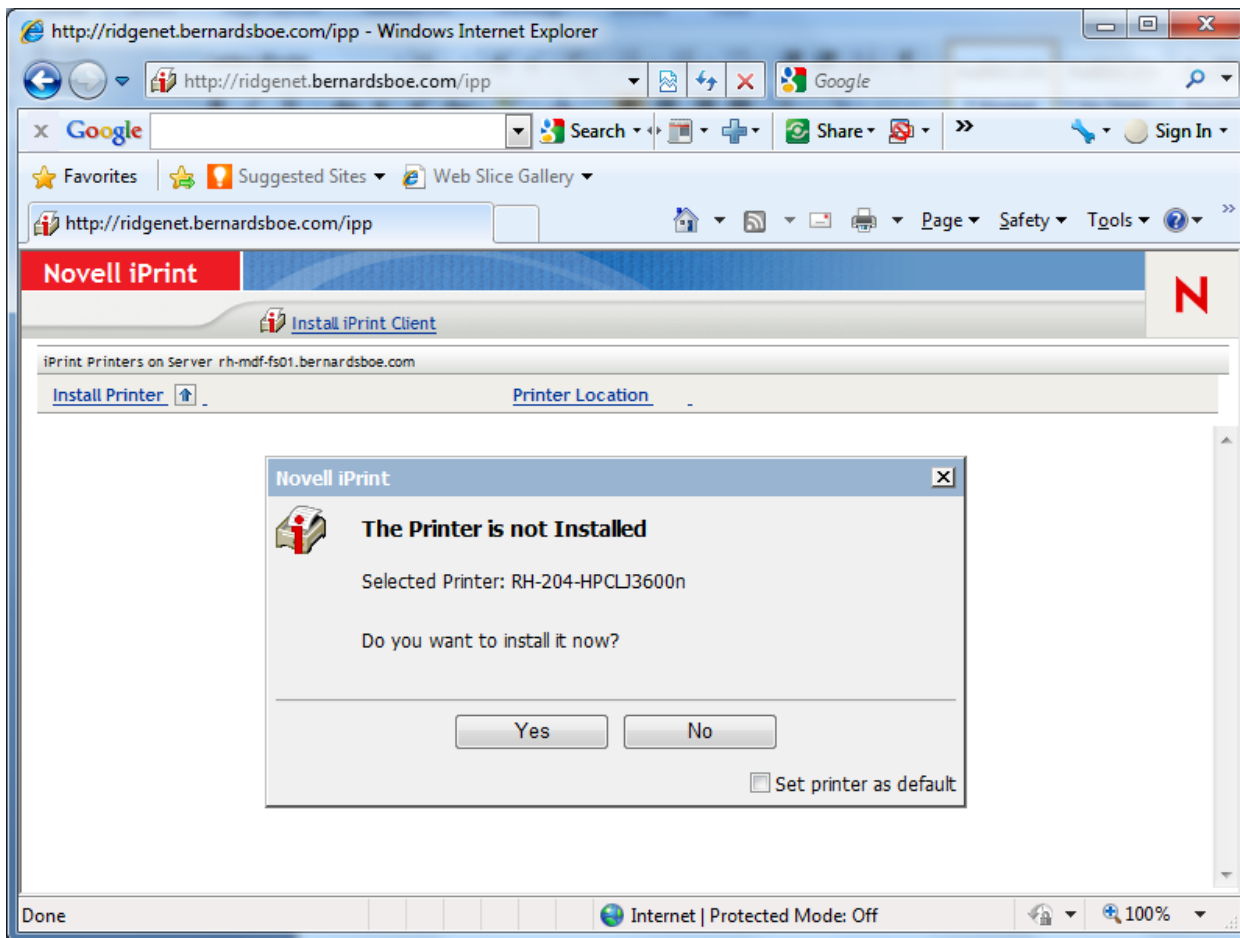
Assigned Drivers	Driver Profile
Windows 2000	HP Color LaserJet 4600 PCL 6
Windows XP	HP Color LaserJet 4600 PCL 6
Linux	HP Color LaserJet 4600 v3010.107 Postscript (Recommended)
Windows 7 32	HP Universal Printing PCL 6

Job list

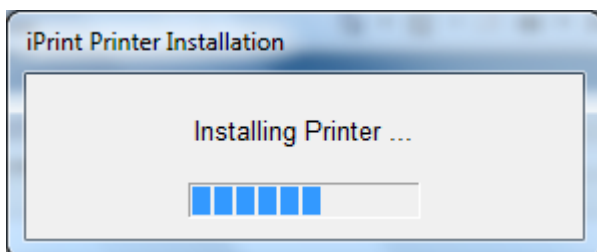
Id	Name	Owner	Status	Size	Submission Time
----	------	-------	--------	------	-----------------

Done Internet | Protected Mode: On 100%

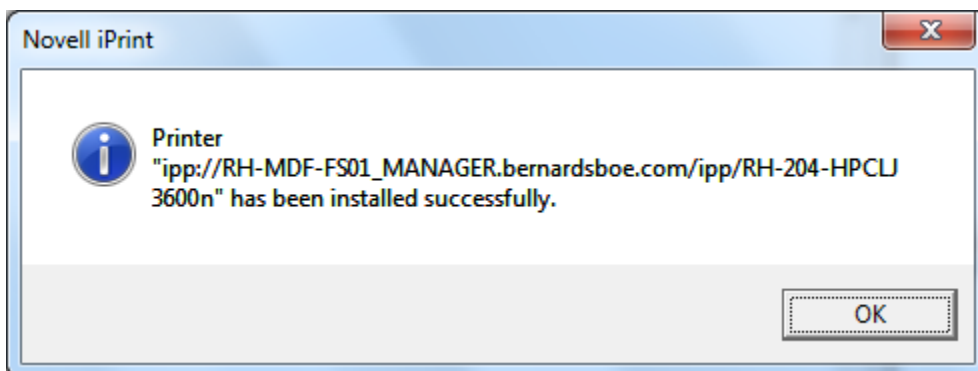
The printer above can be installed in Windows XP computers as well Windows 7, Linux, and Windows 2000. If your computer's operating system is on this list, you can close this window and simply click on the name of the printer you want to install in the window with the list of printer names.



Click Yes.



The installation will take a few minutes. Before a successful installation message will appear.



Once that has completed, you can verify the printer was installed by checking the “Devices and Printers” page from the Start Menu.

